

Mio 7242 Salon Spa Combination



Product Codes beginning with: MIO7242CCR

Also applies to products sold under part numbers: HR60, HZ55, HZ60, HZ65, HZ70, HZ75, HZ80, HZ85

TECHNICAL SPECIFICATIONS

	English	Metric
Outer Dimensions	72" L x 42" W x 25" H	1829 mm L x 1067 mm W x 635 mm H
Interior Dimensions (bottom of bath) L x W (Mid) x W (End)	42 1/2" L x 25 1/2" W x 25 1/2" W	1080 mm L x 648 mm W x 648 mm W
Drain/Equipment Configuration	Center drain/Right end pump & blower	Center drain/Right end pump & blower
Bath Weight (empty)	177 lbs	80 kg
Total Weight/Floor Loading	1,152 lbs 54.8 lbs/ft ²	532.6 kg 267 kg/m ²
Operating Gallonage (min-max)	54 (min) 87 (max) U.S. Gals	204 (min) 329 (max) L
Electrical Specifications	Each component requires a separate, dedicated GCFI protected circuit(s)	
Motor/Pump & Heater	240V 20A 120HZ	
Blower	120V 15A 60HZ	

FEATURES, UPGRADES & ACCESSORIES

Material Type: High-Gloss Acrylic

Install Type: Drop-in or Undermount

Available Colors: White (W), Almond (A), Oyster (Y), Black (B)

Cut-out Template: HR36000

Standard (Included) Features:

8 jets, In-line Heater, Chromatherapy lighting, 900w blower, bottom air channels

Available Control Systems:

J4 Luxury Control Panel (standard)

J5 Luxury LCD Control Panel

Available Upgrades:

Whisper Quiet Technology,

Illumatherapy Lighting

Available Accessories:

DA34 Rotary Drain Kit PVC (specify metal finish)

GU44 TheraPro Jet Trim Kit (specify metal finish)

GU45 AccuPro Jet Trim Kit (specify metal finish)

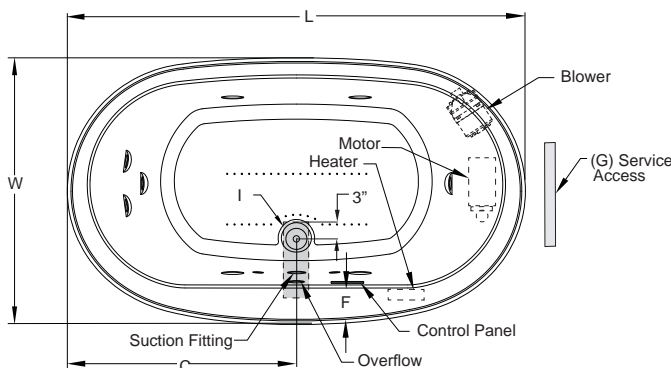
827: Chrome, 826: Brushed Nickel, 845: Oil Rubbed Bronze

*Note: GU44 (Chrome) is standard on Illumatherapy jets.

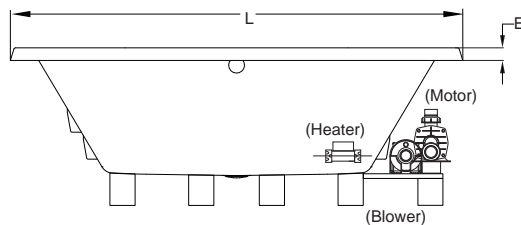
C263 Curved Pillow (specify color) 959: White, 958: Almond, 969: Oyster

GQ88 Light Chromatherapy Add-on Kit

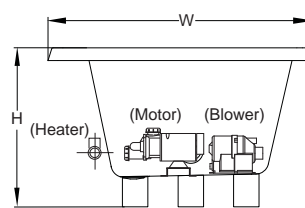
KEY DIMENSIONS



*Deck width reflects only area indicated on detail.

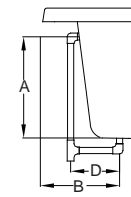


Side View



End View

Note: Drain installation is non-standard, vertical overflow connection requires offset.



Drain/Overflow

Letter	Description	English	Metric
L	Outer Length	72"	1829 mm
W	Outer Width	42"	1067 mm
H	Overall Height	25"	635 mm
A	Overflow Height	17 7/8"	454 mm
B	Long Edge to Drain Center	13 7/16 "	295 mm
C	Short Edge to Drain Center	36"	915 mm
D	Drain Shoe Length	6 7/8"	173 mm
E	Deck Height	2"	89 mm
F	Deck Width*	6 5/8"	168 mm
G	Service Access Dimensions	12" H x 18" L	305 mm x 457 mm
I	Floor Cut-out for Drain	12" x 4"	305 mm x 102 mm