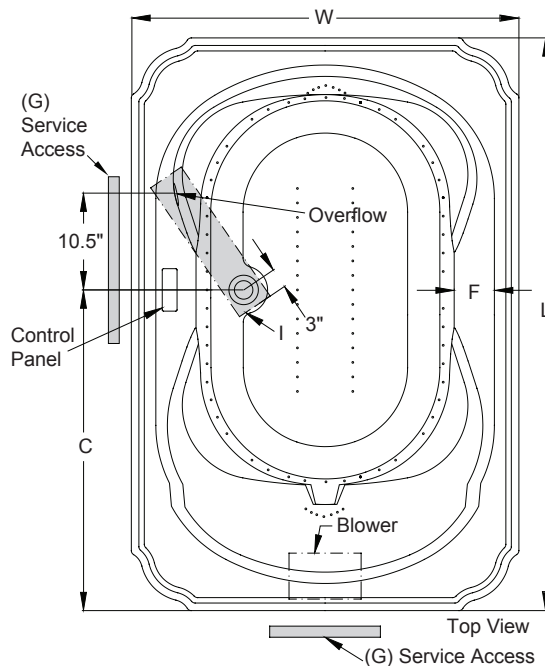
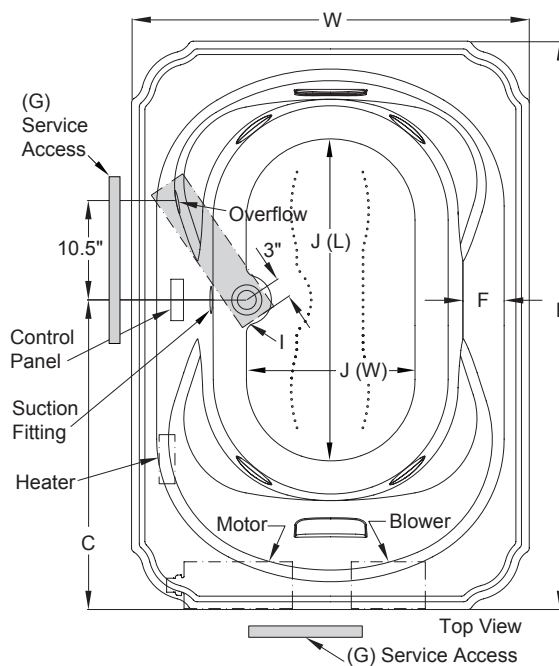


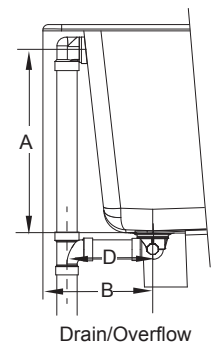
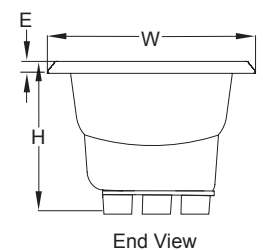
Marineo™ - Technical Specifications for 6042 Models

Letter	Description	SOAKING	PURE AIR® BATH	WHIRLPOOL	SALON® SPA	Each component requires a separate, dedicated GFCI protected circuit		
-	Drain/Motor Location	Center Drain/Right Side Motor And/Or Blower						
-	Cutout Template	Template Provided P/N P187000						
-	Total Weight	970 lbs (440 kg)	1027 lbs (466 kg)	1041 lbs (472 kg)	1071 lbs (486 kg)			
-	Floor Loading	55 lb/ft ² (271 kg/m ²)	59 lb/ft ² (286 kg/m ²)	59 lb/ft ² (290 kg/m ²)	61 lb/ft ² (299 kg/m ²)			
-	Operating Gallons (Max)	78.0 gallons (295.2 liters)						
-	Product Weight	70 lbs (32 kg)	127 lbs (58 kg)	141 lbs (64 kg)	171 lbs (78 kg)			
-	Soaking Depth	17.5" (444.5 mm)						
L	Outer Length	60" (1524 mm)						
W	Outer Width	42" (1067 mm)						
H	Overall Height	26" (660 mm)						
A	Overflow Height	18.75" (476 mm)						
B	Long Edge to Drain Center	11.75" (298 mm)						
C	Short Edge to Drain Center	32.7" (831 mm)						
D	Drain Shoe Length	6" (152 mm)						
E	Deck Height	2" (51 mm)						
F	Deck Width	3" (76 mm)						
G	Service Access Dimensions	12" x 18" (305 mm x 457 mm)						
I	Floor Cutout for Drain	12" x 6" (305 mm x 152 mm)						
J	Interior Dimensions (bottom of bath) L x W	39" x 24" (991 mm x 610 mm)						
						Model with components	GFCI Outlet (60Hz)	
						SOAKING	Soaker only	None
							Soaker w/ Chromatherapy	
						PURE AIR® BATH	Blower	120V 15A
							Chromatherapy (if available)	
						WHIRLPOOL	Motor/Pump	120V 20A
							Heater (if available)	120V 15A
						SALON® SPA	Motor/Pump/Heater	240V 20A
							Blower	120V 15A

KEY DIMENSIONS* [NOTE: The overall dimensions are nominal with a tolerance of +0 and -.25" (6mm).]

 Marineo™ Soaking And Pure Air® Bath Models
(Pure Air® Bath Shown)

 Marineo™ Whirlpool And Salon® Spa Models
(Salon® Spa Shown)


All Models



Refer to installation instructions included with fixture before beginning installation. Please confirm product availability and specifications before commencing with any installation work.

PRODUCT SPECIFICATIONS AND AVAILABILITY ARE SUBJECT TO CHANGE WITHOUT NOTICE