

Allusion 6636 Salon Spa Combination



Product Codes beginning with: ALL6636CCR

Also applies to products sold under part numbers: BK30, JA55, BT80, JA65, JA70, JA75, JA80, JA85

TECHNICAL SPECIFICATIONS

	English	Metric
Outer Dimensions	66" L x 36" W x 26" H	1676 mm L x 914 mm W x 660 mm H
Interior Dimensions (bottom of bath) L x W (Mid) x L (End)	41 3/8" L x 19 1/2" W x 21 7/8" W	1052 mm L x 495 mm W x 556 mm W
Drain/Equipment Configuration	Center drain/Right end pump & blower	Center drain/Right end pump & blower
Bath Weight (empty)	185 lbs	83.9 kg
Total Weight/Floor Loading	1,060 lbs 64.2 lbs/ft ²	481 kg 213.3 kg/m ²
Operating Gallonage (min-max)	56 (min) 75 (max) U.S. Gals	208 (min) 284 (max) L
Electrical Specifications	Each component requires a separate, dedicated GCFI protected circuit(s)	
Motor/Pump & Heater	240V 20A 120HZ	
Blower	120V 15A 60HZ	

FEATURES, UPGRADES & ACCESSORIES

Material Type: High-Gloss Acrylic

Install Type: Drop-in

Available Colors: White (W), Almond (A), Oyster (Y), Black (B)

Cut-out Template: BY20000

Standard (Included) Features:

10 jets, In-line Heater, Chromatherapy lighting, 900w blower, bottom air channels

Available Control Systems:

J4 Luxury Control Panel (standard)

J5 Luxury LCD Control Panel

Available Upgrades:

Whisper Quiet Technology,

Illumatherapy Lighting

Available Accessories:

DA34 Rotary Drain Kit PVC (specify metal finish)

HP55 Rotary Drain Kit (specify metal finish)

D095 TheraPro Jet Trim Kit (specify metal finish)

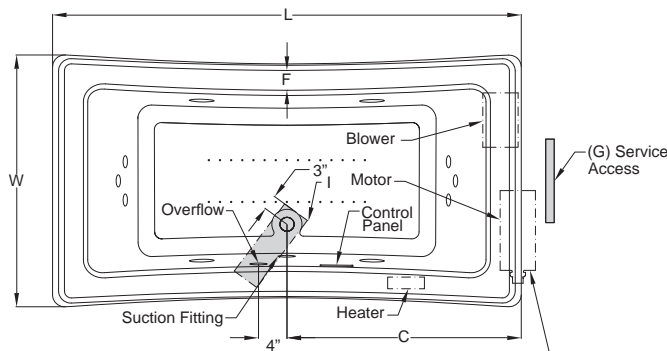
827: Chrome, 826: Brushed Nickel, 845: Oil Rubbed Bronze

*Note: D095 (Chrome) is standard on Illumatherapy jets.

EK91 21" Straight Pillow (specify colors) 959: White, 958: Almond, 969: Oyster

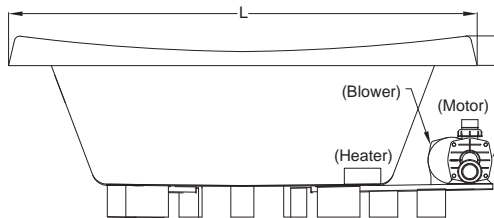
GQ88 Light Chromatherapy Add-on Kit

KEY DIMENSIONS



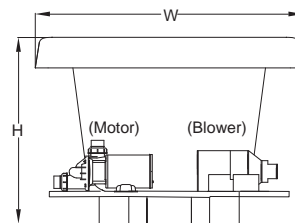
*Deck width reflects only area indicated on detail.

Letter	Description	English	Metric
L	Outer Length	66"	1676 mm
W	Outer Width	36"	914 mm
H	Overall Height	26"	660 mm
A	Overflow Height	17 3/8"	441 mm
B	Long Edge to Drain Center	11 15/16"	302 mm
C	Short Edge to Drain Center	33"	838 mm
D	Drain Shoe Length	6"	152 mm
E	Deck Height	4"	102 mm
F	Deck Width*	3 7/8"	97 mm
G	Service Access Dimensions	12" H x 18" L	305 mm x 457 mm
I	Floor Cut-out for Drain	12" x 4"	305 mm x 102 mm

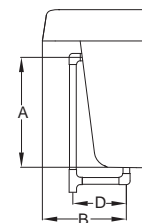


Side View

NOTE: Graphics May Not be to Scale



End View



Drain/Overflow